



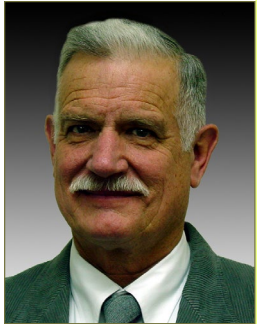
Carbon Light Lines

Your Touchstone Energy® Cooperative

100 E. Willow Ave. • Saratoga, WY • 82331-0579
307.326.5206 • 800.359.0249
info@carbonpower.com
www.carbonpower.com



November 2017



DICK CLIFTON
District 3 Director

Board Actions SEPTEMBER 2017

Approved the Department Production and Financial Reports.

Approved Director Hodgkiss as Voting delegate for Federated Region 7 meeting.

Approved Director Jacobsen as Voting delegate and Director Hodgkiss as Alternate Voting delegate for CFC Region 7 meeting.

Approved Board Resolution 17-09 an Amendment to the 401 (k) & Pension Plan Adoption Agreement.



2018 Scholarships AVAILABLE

GRADUATING HIGH SCHOOL STUDENTS have the opportunity to obtain financial assistance for higher education.

The purpose of the scholarships is to provide financial assistance to deserving students whose parents or legal guardians receive electrical service from Carbon Power & Light. It is part of our commitment to community to provide these scholarships.

Three scholarship opportunities are available to students whose parents or legal guardians receive electricity from Carbon Power & Light and are U.S. citizens.

CARBON POWER & LIGHT SCHOLARSHIP

Six \$1,000 Scholarships are provided to students attending an accredited college or vocational-technical school in the State of Wyoming or at the University of Wyoming as a full time student.

BASIN ELECTRIC POWER COOPERATIVE SCHOLARSHIP

The Basin Electric Power Cooperative

scholarship is for graduating seniors. This scholarship will award an applicant with one (1) \$1,000 scholarship to further the student's education at a certified vocational or technical school.

TRI-STATE G&T SCHOLARSHIP

This scholarship is for graduating seniors. A \$500 scholarship will be awarded to two applicants enrolling in ANY post-secondary accredited institution having at least a one-year degree program.

To obtain an application for the above scholarships or apply for other scholarships (geared specifically for electrical careers), log onto www.carbonpower.com and click on "scholarships".

The application(s) must be postmarked or received on or before 4:30 p.m. Monday, February 2, 2018. For questions, please contact Valerie Remick by emailing vremick@carbonpower.com, or by calling Monday-Friday, 8 a.m.- 4:30 p.m. at 307.326.5206 or 800.359.0249.



Member-Owned Service Proud



[RUSSELL WALDNER, GENERAL MANAGER]



It is official no rate increase for 2018! Last month I had to use the weasel words "it appears there will be no rate increase" but now I know there will be no rate increase.

We are finishing up on the US Forest bark beetle right of way clearing on Highway 130 above Centennial in coordination with WYDOT's road right of way clearing project. We took a look back at when we started working on protecting our system and forest from falling bark beetle killed trees and we will hit the 10 year mark this winter. We have just one small stretch left and we are looking at options for the current route and a possibility of underground should all involved agree.

We want to let you know we are thankful to all of our membership that has made us the great little Cooperative we are today. We hope during your celebration of all you are thankful for that we

would be a part of making it happen.

As always...please call if you have questions and thanks for being the Member-Owners of Carbon Power and Light.

Russell

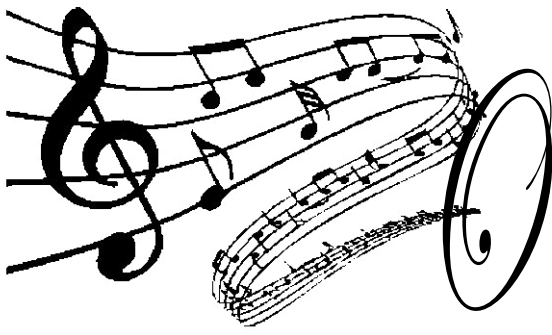
*Stay safe
& be
Thankful
out there!!*



Attention Time of Day Customers

If you are an owner of Electric Storage Heating System(s), do not forget to adjust your timer(s)!

Day Light Saving Time Ends November 5, 2017!



Oh Christmas Tree . . .

Your holiday wish list almost certainly doesn't include a trip to the hospital. A few tips to help you trim the tree, light up the house and relax by an open fire, without having to worry about injuries to you, the kids or your pets.

Buying 101

Before buying a live Christmas tree, conduct a three-part stress test. A fresh tree has needles that resist being pulled off and do not snap when bent, a trunk bottom that's sticky with resin, and strong limbs that will drop just a few needles if shaken.

Christmas Trees Can't Take the Heat

Don't position a live Christmas tree next to fireplaces, heating ducts or radiators, nor place them where they block doorways or high-traffic areas. *Margaret Thompson* Remember that artificial trees, even if they have a "Fire Resistant" label, can still go up in flames.

Hang Ornaments With Extra Care

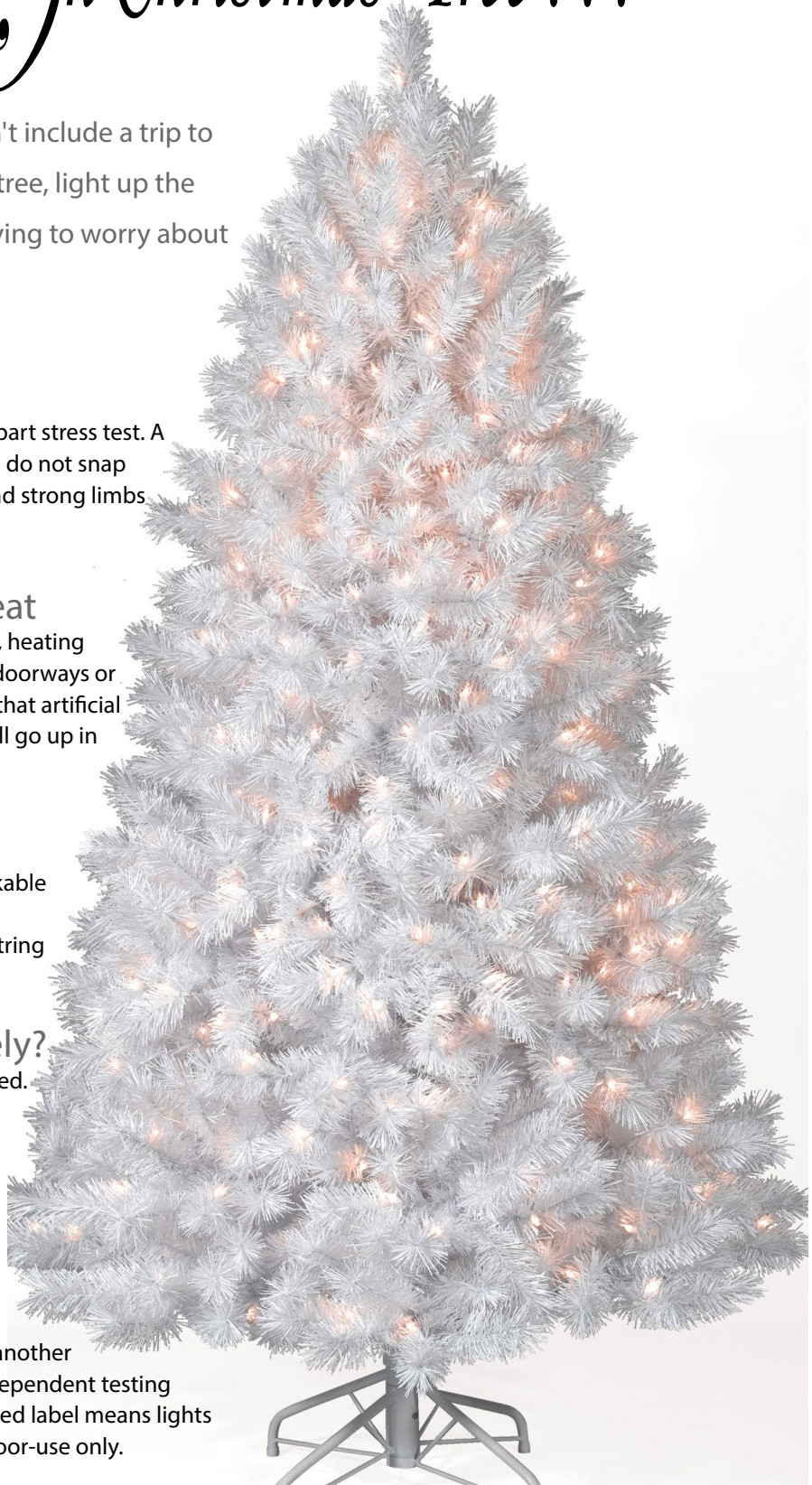
Keep child and pet safety in mind by placing unbreakable and non-toxic ornaments on the lowest areas of the Christmas tree. Replace metal hooks with ribbon or string to prevent choking and injury.

Have You Watered Your Tree Lately?

A dry tree will burn faster than one that's been watered. Check the water level of your tree daily and keep it in a vessel that can hold an adequate water supply. To test to see if your tree is sufficiently hydrated, give a branch a gentle tug and see if any needles break.

Do Your Lights Pass the UL Test?

Don't use holiday lights unless they have cleared the strict safety tests conducted by Underwriters Lab or another established testing facility. Lights checked by the independent testing company are marked with a holographic UL label. A red label means lights can be used indoors and out, while green means indoor-use only.



Member Statistics Report	August 2016	August 2017
Financial		
Total Utility Plant	\$41,440,506	\$42,533,330
Cost of Purchase Power	\$577,112	\$617,354
Expenses Less Power Cost	\$494,318	\$448,500
Tax & Interest Paid	\$53,071	\$52,144
Interest Received on Investments	\$3,580	\$5,092
Energized Line & Consumers		
Miles of Energized Line	1,963	1,967
Consumers Per Mile	3.2	3.2
Meters		
Total Meters	6,199	6,246
Residential/Rural	4,972	4,985
Irrigation	50	52
Large Power/Commercial	1,121	1,148
Other	56	61
kWh Usage		
Total kWh	7,143,215	8,056,340
Residential/Rural	2,291,949	2,375,823
Irrigation	484,466	574,542
Large Power/Commercial	4,191,420	4,932,717
Other	175,380	173,258
Averages		
Avg. Residential kWh Used	460	477
Avg. Residential/Rural Bill	\$94	\$86



Carbon Power & Light wishes you and your family a wonderful and safe Thanksgiving holiday. There is so much to be thankful for and we thank you for everything that you do.

Our office will be closed November 23-24, 2017 for the holiday.



Carbon welcomes any comments or questions members may have. If you have a question on any part of the cooperative business, please write or email the cooperative and we will see that your question is answered. Mail comments to Carbon Power & Light, Inc. P.O. Box 579, Saratoga, WY 82331, ATTN: Newsletter or email info@carbonpower.com.

Visit our website at: www.carbonpower.com
 Edited by Joe Parrie

IF YOU HAVE A PROBLEM WITH YOUR POWER: Please check your breakers. If you can determine that your neighbors are also without power, call Carbon day or night at 307.326.5206 or 800.359.0249.

BOARD OF DIRECTORS

DISTRICT 1	DISTRICT 2	DISTRICT 3
Dan Hodgkiss	Jerry Rabidue	Dick Clifton
Gary Jacobsen	Kenny Curry	Clay Thompson
Laurie Forster	Bill Sherwood	Jim Rogers

For online bill pay or ACH: www.carbonpower.com
 For more information, please call the billing dept.

REMEMBER you can pay your bill at the following locations:

Rawlins National Bank	ANB	Bank of the West
202 5th St	3908 Grand Ave	302 N. 1st St.
Rawlins, WY	Laramie, WY	Saratoga, WY

**Energy Efficiency
 Tip of the Month**



A crackling fire in the hearth warms the house, but don't let it heat up your electric bill! Caulk around the fireplace hearth and keep the damper closed when a fire is not burning.

Source: U.S. Dept. of Energy

facebook
 follow us on Facebook

Carbon Power & Light delivers
high speed internet
exede
 by ViaSat **Call Now!**



EVERY MEMBER HAS A VOICE
 MAKE SURE YOURS IS HEARD
 TOGETHERWESAVE.COM



If you find your name in *asterisks* in this newsletter, contact Carbon Power & Light to receive a \$30 credit on your electric bill.

CARBON POWER & LIGHT
 Office Hours
MAY - SEPTEMBER
 Monday - Thursday ☞ 7 AM - 5:30 PM
OCTOBER - APRIL
 Monday - Friday ☞ 8 AM - 4:30 PM

