



CARBON LIGHT LINES

100 E. Willow Ave. • Saratoga, WY • 82331-0579
307.326.5206 • 800.359.0249
info@carbonpower.com
www.carbonpower.com

December 2024



CLAY THOMPSON
District 3 Director

Board Actions OCTOBER 2024

Approved the
Department
Production and
Financial Reports.

Approved Deceased
Patrons for
\$66,745.76.

Cost of Service Study
and Rate Increase was
approved.

CLOSED

**Carbon Power & Light
will be closed
December 25 and
January 1 for the
holidays.**

In the event of an outage
or service interruption,
call 307.326.5206 or
800.359.0249
24 hours a day,
every day.

GRADUATING HIGH SCHOOL STUDENTS have the opportunity to obtain financial assistance for higher education. The purpose of the scholarships is to provide financial assistance to deserving students whose parents or legal guardians receive electrical service from Carbon Power & Light. It is part of our commitment to community to provide these scholarships.

Nine scholarship opportunities are available to students whose parents or legal guardians receive electricity from Carbon Power & Light.

CARBON POWER & LIGHT SCHOLARSHIP

Six \$3,000 Scholarships are provided to students attending an accredited college or vocational-technical school in the State of Wyoming or at the University of Wyoming as a full time student.

BASIN ELECTRIC POWER COOPERATIVE SCHOLARSHIP

The Basin Electric Power Cooperative scholarship is for graduating seniors. This scholarship will award an applicant with one (1) \$1,000 scholarship to further the student's

education at a certified vocational or technical school.

TRI-STATE G&T SCHOLARSHIP

This scholarship is for graduating seniors. A \$500 scholarship will be awarded to two applicants enrolling in ANY post-secondary accredited institution having at least a one-year degree program.

To obtain an application for the above scholarships or apply for other scholarships (geared specifically for electrical careers), log onto www.carbonpower.com and click on "scholarships".

The application(s) must be postmarked or received on or before 4:30 p.m. Monday February 3, 2025. For questions, please contact Valerie Remick by emailing vremick@carbonpower.com, or by calling Monday-Friday, 8 a.m.- 4:30 p.m. at 307.326.5206 or 800.359.0249.





Member-Owned Service - Proud



RUSSELL WALDNER, GENERAL MANAGER



All of us hope you have had an outstanding Holiday season!

I think last month's article has very impactful information so here it is again. If you know other members that may have missed it, please pass it along.

During the annual meeting I informed you of the need for a rate increase. The good news is I was right about needing a rate increase the bad news is I was overly optimistic about how large it would be.

Guernsey completed our cost of service study and the Board voted to increase rates starting 1/1/2025 8.48% overall. This raises our annual margin \$1,361,488 for a rate of return of 3.84%.

The Board evaluated how each rate class impacted our bottom line and chose rates that move ever closer to our cost of service for each rate class. This is something we have been working on for years and will continue to do. Each rate class and each members increase is impacted differently based on usage pattern. We will have this data posted on our website so you can review the impact to you.

We also will be moving toward a three part rate in the future and want to start the process of helping you understand the impact to you of the different rate components. At some point in the future we will be billing a general service rate that includes a facilities charge, kW demand and kWh. Facilities Charge is the amount that covers the cost of everything it takes to have power to your meter. kW demand is the peak amount you use during the month measured in Kilowatts. This is measured by our meter in 15 minute intervals and is the peak amount you would use in one hour. kWh is the method used today for all your usage in kilowatt-hours.

Let's use a general service single phase account (this is 88 percent of our meters) with average usage (this is 46 percent our usage) as an example with new rates:

Facility Charge		\$43.50
kW demand	6.89 kW @ \$0.00	\$0.00
kWh usage	960 kWh @ \$0.120026	\$115.23
Tax		\$9.52
Total		\$168.25

If we implement the kW demand charge at \$0.75 in this example the kW demand charge would be \$5.17. The reason for kW Demand component is to more closely match the charges for our wholesale power supply. Currently our wholesale kW demand charge is 675 times higher than our kWh rate. In 2017 it was 456 times the kWh rate. This demonstrates the increasing cost of capacity.

As always, please contact us with any comments or questions.

Member Statistics Report		September 2023	September 2024
Financial			
Total Utility Plant		\$57,868,370	\$61,459,228
Cost of Purchase Power		\$568,743	\$661,052
Expenses Less Power Cost		\$513,247	\$599,369
Tax & Interest Paid		\$67,989	81,481
Interest Received on Investments		\$20,419	\$21,660
Energized Line & Consumers			
Miles of Energized Line		2,014	2,020
Consumers Per Mile		3.3	3.3
Meters			
Total Meters		6,692	6,733
Residential/Rural		5,512	5,557
Irrigation		54	55
Large Power/Commercial		1,076	1,072
Other		50	49
kWh Usage			
Total kWh		7,936,977	8,175,963
Residential/Rural		2,594,696	2,566,940
Irrigation		165,666	196,404
Large Power/Commercial		5,007,059	5,242,682
Other		169,556	169,937
Averages			
Avg. Residential kWh Used		471	462
Avg. Residential/Rural Bill		\$85	\$85

Carbon welcomes any comments or questions members may have. If you have a question on any part of the cooperative business, please write or email the cooperative and we will see that your question is answered.*Doggett Greenhouse* Mail comments to Carbon Power & Light, Inc. P.O. Box 579, Saratoga, WY 82331, ATTN: Newsletter or email info@carbonpower.com.

Visit our website at: www.carbonpower.com
Edited by Joe Parrie

IF YOU HAVE A PROBLEM WITH YOUR POWER: Please check your breakers. If you can determine that your neighbors are also without power, call Carbon day or night at 307.326.5206 or 800.359.0249.

BOARD OF DIRECTORS

<u>DISTRICT 1</u>	<u>DISTRICT 2</u>	<u>DISTRICT 3</u>
Roger Cox	Shae Johnson	Joe Devine
Shawn Brown	Kenny Curry	Clay Thompson
Debbie Reichert	Everett Summers	Jim Rogers

For online bill pay: www.carbonpower.com
For more information,
please call the billing dept.

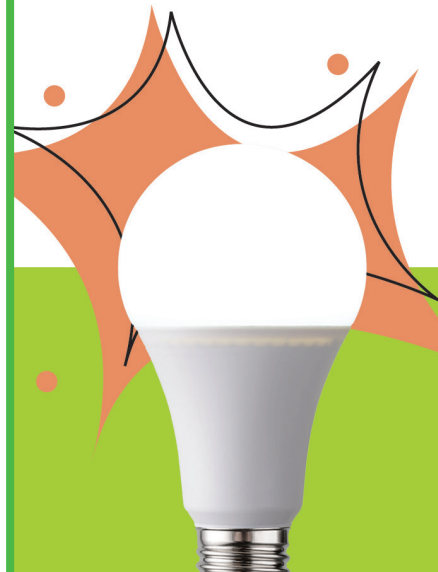
REMEMBER you can also pay your bill at the following location:

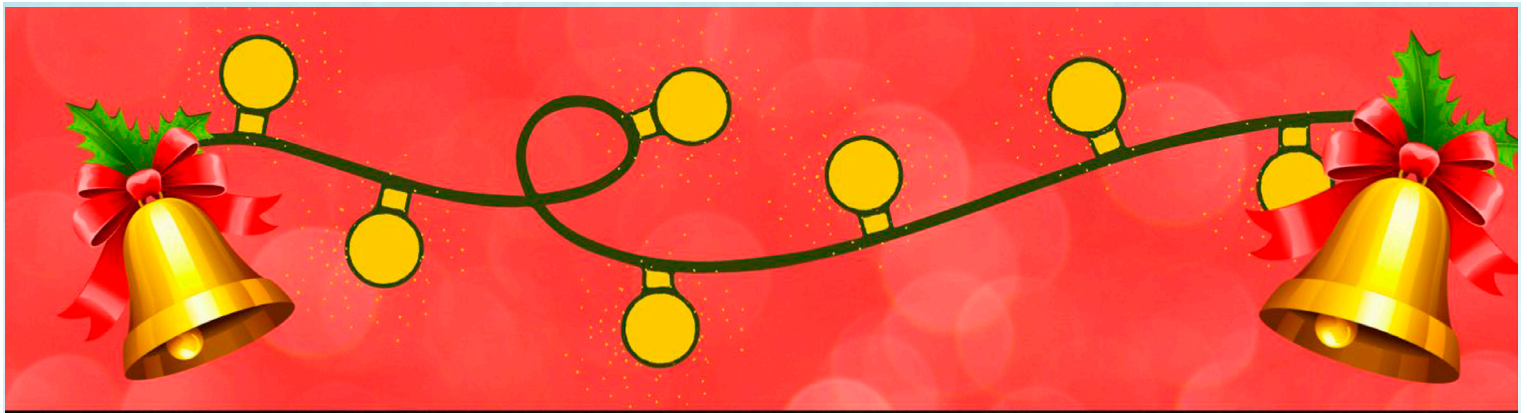
ANB
3908 Grand Ave
Laramie, WY

ENERGY EFFICIENCY TIP OF THE MONTH

Taking steps to help your home heating system run more efficiently can reduce energy use and lower your winter bills. Check to see if any air vents around your home are blocked by furniture, curtains or other items. Obstructed vents force your heating system to work harder than necessary and can increase pressure in the ductwork, causing cracks and leaks to form. If necessary, consider purchasing a vent extender, which can be placed over a vent to redirect air flow from underneath furniture or other obstructions.

Source: energy.gov





Merry Christmas!

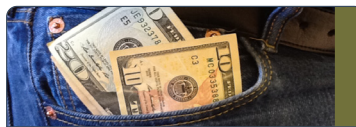


And a Happy New Year!



EVERY MEMBER HAS A VOICE
MAKE SURE YOURS IS HEARD
TOGETHERWESAVE.COM

facebook
follow us on Facebook



If you find your name in *asterisks* in this newsletter, contact Carbon Power & Light to receive a \$30 credit on your electric bill.

CARBON POWER & LIGHT
Office Hours

MAY - SEPTEMBER

Monday - Thursday • 7 AM - 5:30 PM

OCTOBER - APRIL

Monday - Friday • 8 AM - 4:30 PM

YOUR COOPERATIVE IS A PROUD MEMBER OF

